



Q I. Read the statements given below and circle the option with the correct answer.

1.	_____ is used to test the presence of starch in food items.						
a.	water	b.	iodine	c.	oxygen	d.	salt
2.	Extra glucose which is not utilized by plants, converts into _____.						
a.	carbon dioxide	b.	minerals	c.	oxygen	d.	starch
3.	A food chain always starts with a/an _____ life.						
a.	animal	b.	bird	c.	plant	d.	water
4.	_____ takes its food from dead and decaying organisms.						
a.	Fungi	b.	Bacteria	c.	Coral root	d.	a, b and c
5.	Insectivorous plants feed on insects to get the minerals, especially _____.						
a.	nitrogen	b.	oxygen	c.	starch	d.	glucose
6.	Iodine changes the colour of starch to _____.						
a.	red brown	b.	blue black	c.	green black	d.	blue brown

Q II. Identify the odd one out, circle it and state why it is odd.

1. leopard wolf crow tiger

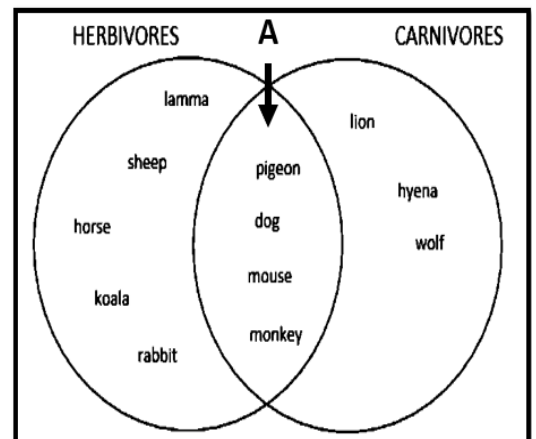
Ans: _____

2. water minerals oxygen carbon dioxide

Ans: _____

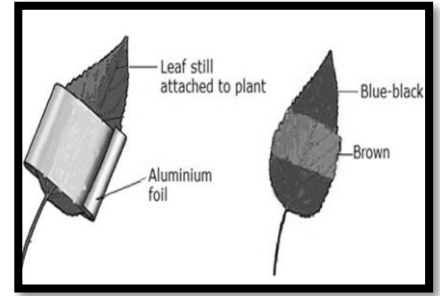
Q III. In the Venn diagram given alongside, the part A shows a group of animals in the area common to both the circles. What does the part A represent?

Ans:



Q IV. Study the extract and provide suitable answers for the questions.

Rahul took a potted plant in his garden and wrapped one of its leaves with an aluminum foil paper as shown in the picture given alongside. After a few days he plucked the leaf and conducted a starch test on this leaf. He observed that the part of the leaf covered with the foil paper did not turn blue black.



1. What has happened to the part of the leaf that was not covered with the foil after the test for starch?

Ans: _____

2. The part of the leaf covered with the foil did not turn blue black after the starch test. Justify this statement with a suitable reason.

Ans: _____

3. What was the role of the aluminum foil in this activity?

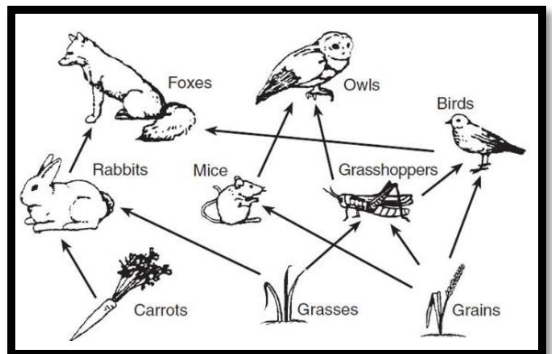
Ans: _____

4. What do you conclude from this activity?

Ans: _____

Q V. Study the picture of the Food Web given alongside and provide answers for the questions.

a. Define a Food Web: _____



b. How many food chains can you see in this food web?

Ans: _____

c. Create three different food chains from the given food web.

1. _____
2. _____
3. _____

Q VI. Complete the food chain by drawing a relevant picture in the box provided to you.

